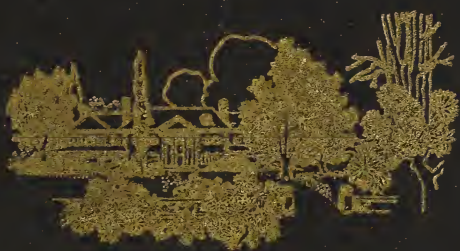


Historic, archived document

Do not assume content reflects current scientific knowledge, policies, or practices.

**PLANTERS
PRICE LIST
OF
ORNAMENTALS**



**GROWN BY
HOWELL NURSERIES
R. F. D. No. 4
KNOXVILLE, TENNESSEE**

**PEOPLES PHONE P8316
BELL PHONE . . . 703**

VISITORS WELCOME

HOWELL'S HARDY TREES & PLANTS *for* EVERY PLACE & PURPOSE

FALL *of* 1925
SPRING 1926

Introduction	2
Coniferous Evergreens	3
Broad Leaf Evergreens	9
Flowering Shrubs	12
Hardy Perennials	20
Deciduous Trees	23
Vines and Climbers	25
Climbing Roses	27

HOWELL NURSERIES
KNOXVILLE, TENNESSEE

TELEPHONES

BELL 703 - - PEOPLES P8316

Terms of Sale

We have been in our present location since 1835, and can refer to thousands of satisfied customers and to R. G. Dunn & Co., Bradstreet & Co., and to any bank or reputable business house in Knoxville as to our reliability and responsibility.

GUARANTEE

All plants are guaranteed true to name, full count, up to grade and in good condition when shipped, but we can give no guarantee as to the life of the plants as we have no control over them after leaving our hands. All claims must be made within ten days and will have our careful consideration.

Terms are cash with order.

Shipping season opens about October first and continues till about April first with a few exceptions.

Prices quoted are as low as we can grow first class stock at a reasonable profit, and include packing and delivery to the transportation company.

Stock travels at purchaser's risk and expense entirely, and any claims for bad condition should be addressed to the transportation company.

Our stock is regularly inspected by the State Entomologist and a certificate to that effect is attached to every shipment.

When ordering please specify whether by freight or express. Most nursery stock is too heavy to go by parcel post.

You are cordially invited to visit us at any time except Sunday, and we will take great pleasure in going over our stock with you. We are located on the Dixie Highway, two miles east from the center of Knoxville.

All orders, checks, etc. should be made out to

HOWELL NURSERIES

KNOXVILLE, TENNESSEE.

PHONES:

Cumberland 703

Peoples Park 8316



A FOUNDATION PLANTING

Coniferous Evergreens

In this list you will find many of merit and some that are of special merit though not generally planted.

We endeavor to propogate so that we will constantly have on hand all of the sizes generally planted, and are always on the lookout for varieties of merit and often have varieties in small quantities not listed.

The Conifers are deservedly popular and are growing more so each year as they can be used for so many purposes and can be obtained in such a variety of sizes, shapes and colors.

12 plants of a size and variety will be furnished at the price of 10.

Arborvitae, (see Thuya).

Biota, (see Thuya).

Cephalotaxus Fortunei, beautiful low evergreen.

12 to 18 in. \$2.50

Cephalotaxus Harrintonia Fastigata, upright yew.

12 to 18 in. \$2.50

18 to 24 in. 3.00

Cedrus Atlantica, Atlas cedar.

12 to 18 in. \$2.00

Cedrus Deodora, true cedar.

12 to 18 in. \$2.00

18 to 24 in. 2.50

2 to 3 ft. 3.50

3 to 4 ft. 5.00

Cedrus Libani, cedar of Lebanon.

18 to 24 in. \$2.00

2 to 3 ft. 3.00

<i>Chamaecyparis Lawsoniana</i> , Lawson's cypress.	
8 to 12 in.	\$1.00
<i>Chamaecyparis Lawsoniana Fletcheri</i> .	
12 to 18 in.	\$1.50
18 to 24 in.	2.00
<i>Chamaecyparis Lawsoniana Ribunei</i> , blue cypress.	
18 to 24 in.	\$2.50
<i>Chamaecyparis Lawsoniana</i> , Triumph of Boskoop.	
1½ to 2 ft.	\$2.00
2 to 3 ft.	2.50
3 to 4 ft.	3.50
<i>Chamaecyparis Retinospora Ericoides</i> , Tom Thumb Retinospora.	
12 to 18 in.	\$1.50
<i>Chamaecyparis Retinospora Filifera</i> , Thread branch- ed cypress.	
<i>Chamaecyparis Retinospora Filifera Aurea</i> , golden thread branched cypress.	
12 to 18 in.	\$2.50
18 to 24 in.	3.50
<i>Chamaecyparis Retinospora Leptoclada</i> , new fine form Retinospora.	
12 to 18 in.	\$2.50
<i>Chamaecyparis Retinospora Obtusa</i> , seedlings var- iable.	
3 to 4 ft.	\$3.50
<i>Chamaecyparis Retinospora Obtusa Aurea Youngi</i> , Young's golden Retinospora.	
2 to 3 ft.	\$2.50
3 to 4 ft.	3.50
<i>Chamaecyparis Retinospora Obtusa Compacta</i> , foot- ball cypress.	
18 to 24 in.	\$2.50
<i>Chamaecyparis Retinospora Obtusa Nana</i> , dwarf Hinoki cypress.	
12 to 18 in.	\$3.00
<i>Chamaecyparis Retinospora Pisifera</i> , sawara retin- ospora.	
2 to 3 ft.	\$2.50
3 to 4 ft.	3.50
<i>Chamaecyparis Retinospora Picifera Argentia Aurea</i> , golden sawara cypress.	
8 to 12 in.	\$1.50
<i>Chamaecyparis Retinospora Pisifera Aurea</i> .	
2 to 3 ft.	\$2.50
<i>Chamaecyparis Retinospora Plumosa</i> , plume cypress.	
18 to 24 in.	\$1.50
2 to 3 ft.	2.50
<i>Chamaecyparis Retinospora Plumosa Aurea</i> , golden plume cypress.	
12 to 18 in.	\$1.50
18 to 24 in.	2.00



AMERICAN ARBORVITAE

Chamaecyparis Retinospora Squarrosa Seiboldi.

12 to 15 in.\$1.50

Chamaecyparis Retinospora Squarrosa Veitchi, silver cypress.

12 to 18 in.\$1.50

18 to 24 in. 2.00

2 to 3 ft. 3.00

Chamaecyparis Retinospora Viridissima.

18 to 24 in.\$1.50

2 to 3 ft. 2.50

Cryptomeria Japonica, Japanese cedar.

2 to 3 ft.\$2.00

3 to 4 ft. 3.00

Juniperus Ashfordi, upright juniper.

2 to 3 ft.\$2.50

Juniperus Chinensis Densa Glauca, compact dwarf blue Chinese juniper.

12 to 18 in.\$1.50

18 to 24 in. 2.50

Juniperus Communis, common juniper.

2 to 3 ft.\$2.50

Juniperus Cupressifolia, cypress leaved juniper.

18 to 24 in.\$2.50

Juniperus Douglassi Aurea, golden spreading juniper.

18 to 24 in.\$2.00

2 to 3 ft. 3.00

3 to 4 ft. 4.00



A LANDSCAPE PLANTING

Juniperus Hibernica, Irish juniper.

2 to 3 ft.\$1.50

Juniperus Japonica, Japanese juniper.

18 to 24 in.\$2.00

24 to 30 in. 3.00

Juniperus Japonica Sylvestris, silver Japanese juniper.

2 to 3 ft.\$2.50

3 to 4 ft. 3.50

Juniperus Luptoni, two foliage upright juniper.

2 to 3 ft.\$2.50

3 to 4 ft. 3.50

Juniperus Nana, flat spreading juniper.

18 to 24 in.\$2.00

24 to 30 in. 4.00

Juniperus Oblonga Pendula, drooping juniper.

18 to 24 in.\$1.50

2 to 3 ft. 2.50

Juniperus Pfitzeriana, Pfitzer's spreading juniper.

18 to 24 in.\$2.50

Juniperus Sabina, savin juniper.

18 to 24 in.\$2.00

Juniperus Sabina Horizontalis, savin spreading juniper.

18 to 24 in.\$1.50

Juniperus Sabina Tamariscifolia, tamarix leaved spreading juniper.

18 to 24 in.\$2.50

Juniperus Shuki, Chinese variegated leaf juniper.

12 to 18 in.\$1.50

Juniperus Suecica, Swedish juniper.

2 to 3 ft.\$2.00

Juniperus Triparta.

18 to 24 in.\$1.50

Juniperus Virginiana Glauca.

2 to 3 ft.\$4.00

3 to 4 ft. 6.00



A FOUNDATION PLANTING

- Juniperus Virginiana Globosa.*
12 to 18 in. \$2.50
- Juniperus Waukegan*, gray carpet juniper.
18 to 24 in. \$2.00
- Pinus Strobus*, white pine.
2 to 3 ft. \$2.00
3 to 4 ft. 3.00
- Pinus Tayosho*, Japanese table pine.
12 to 18 in. \$1.50
- Pinus Thunbergi*, Japanese black pine.
12 to 24 in. \$1.50
2 to 3 ft. 2.50
- Picea Canadensis*, white spruce.
12 to 18 in. \$1.50
- Picea Douglassi*, Douglas Fir.
12 to 18 in. \$1.50
- Picea Excelsa*, Norway spruce.
18 to 24 in. \$1.50
24 to 30 in. 2.50
- Picea Pungens*, Colorado blue spruce seedlings.
10 to 12 in. \$2.00
- Thuja*, Japanese types.
- Thuja Orientalis*, Chinese arborvitae.
2 to 3 ft. \$2.00
3 to 4 ft. 2.50
- Thuja Orientalis Aurea Nana*, Berckman's golden arborvitae.
12 to 18 in. \$2.00
- Thuja Orientalis Aurea Pyramidalis*, golden pyramidal arborvitae.
18 to 24 in. \$2.00

Thuya Orientalis Dailey Nana , very compact green arborvitae.	
18 to 24 in.	\$2.00
Thuya Orientalis Gracilis , Japanese threadlike arborvitae.	
18 to 24 in.	\$2.00
24 to 30 in.	3.00
Thuya Orientalis Griffing Globe , Japanese globe arborvitae.	
10 to 12 in.	\$1.50
Thuya Orientalis Rosedale , Rosedale arborvitae.	
12 in.	\$1.50
Thuya Orientalis Semper Aurescens , evergolden arborvitae.	
18 to 24 in.	\$2.50
2 to 3 ft.	3.50
Thuya, American types.	
Thuya Occidentalis , American arborvitae.	
12 to 18 in.	\$1.00
18 to 24 in.	1.50
2 to 3 ft.	2.00
3 to 4 ft.	3.00
Thuya Occidentalis Columbia , white tipped arborvitae.	
18 to 24 in.	\$2.00
24 to 30 in.	3.50
Thuya Occidentalis Ellwangeriana , Tom Thumb arborvitae.	
12 to 18 in.	\$1.50
18 to 24 in.	2.50
Thuya Occidentalis Erecta , erect arborvitae.	
18 to 24 in.	\$2.50
Thuya Occidentalis George Peabody.	
18 to 24 in.	\$2.00
2 to 3 ft.	3.00
3 to 4 ft.	5.00
Thuya Occidentalis Globosa , globe arborvitae.	
12 to 18 in.	\$2.00
Thuya Occidentalis Hoveyi , Hovey's globe arborvitae.	
12 to 18 in.	\$2.00
Thuya Occidentalis Lobbi , giant arborvitae.	
2 to 3 ft.	\$2.50
3 to 4 ft.	3.50
Thuya Occidentalis Pimula , dwarf arborvitae.	
12 to 18 in.	\$2.00
Thuya Occidentalis Plicata Pyramidalis , giant pyramidal arborvitae.	
18 to 24 in.	\$2.00
2 to 3 ft.	3.00
Thuya Occidentalis Reidi , Reid's arborvitae.	
18 to 24 in.	\$2.50

Thuja Occidentalis Stricta Aurea, golden pyramidal arborvitae.

2 to 3 ft. \$3.50

Thuja Occidentalis Versmani.

24 in. \$2.50

Thuja Occidentalis Warreana, Siberian Arborvitae

18 to 24 in. \$2.50

24 to 30 in. 3.50

Tsuga Canadensis, Hemlock spruce.

18 to 24 in. \$1.50

2 to 3 ft. 2.50

3 to 4 ft. 3.50

Broad Leaf Evergreens

Broad leaf evergreens are an essential in all foundation plantings, especially in the middle and southern states, and give a variety and richness of effect that is impossible with any other class of plants. This effect is more pronounced in winter than in their growing season.

Abelia Grandiflora, best broad leaf evergreen for base planting, blooms all summer.

12 to 18 in. \$0.50

18 to 24 in. 1.00

2 to 3 ft. 1.50

Aucuba Japonica, large evergreen leaves spotted yellow.

12 to 18 in. \$2.50

Berberis Trifoliata, spiny berberis, Agerita.

18 to 24 in. \$2.00

Berberis Wilsonae, Wilson's barberry.

18 to 24 in. \$2.50

Buxus Aurea, golden boxwood.

12 to 18 in. \$1.50

Buxus Sempervirens, boxwood.

8 to 12 in. \$1.00

12 to 18 in. 2.00

18 to 24 in. 2.50

Calluna Vulgaris, Scotch heather.

18 to 24 in. \$2.00

Cotoneaster Lemoine, glaucous evergreen foliage.

18 to 24 in. \$1.00

Crataegus Pyracantha Lelandi, evergreen thorn.

18 to 24 in. \$1.00

Dasylyrion Satal Texanum, narrow saw tooth leaves, resembling the yucca, suitable for dry places.

2 yr. 18 to 24 in. \$1.00

Eleagnus Extra broad leaf, our own introduction.

18 to 24 in. \$1.50

Eleagnus Macrophylla , broad leaf eleagnus.	
18 to 24 in.	\$1.50
Eleagnus Reflexa , bronze eleagnus.	
18 to 24 in.	\$1.50
Eleagnus Fruitlandi , leaves large silvery beneath.	
18 to 24 in.	\$2.00
Eleagnus Pungens Variegata , golden variegated leaves.	
18 to 24 in.	\$2.50
Euonymus Britzensis , beautiful yellow seed in white capsules.	
18 to 24 in.	\$1.50
2 to 3 ft.	2.50
Euonymus Japonica , dark green leaves.	
18 to 24 in.	\$1.00
2 to 3 ft.	1.50
Euonymus Japonica Albo-marginata , pearl edge.	
10 to 12 in.	\$0.75
12 to 18 in.	1.00
18 to 24 in.	1.50
Euonymus Seiboldi .	
18 to 24 in.	\$1.50
Hypericum calycinum , good evergreen ground cover plant for shady places.	
2 yr.	\$0.50
Ilex Crenata , Japanese holly.	
12 to 18 in.	\$1.50
18 to 24 in.	2.50
Ilex Cassine , dahoon holly for the south.	
8 to 10 in.	\$1.00
10 to 12 in.	1.50
Ilex Opaca , American holly.	
18 to 24 in.	\$1.50
2 to 3 ft.	2.50
3 to 4 ft.	3.50
Few large specimen plants priced on application.	
Ilex Vomitoria , Yupon holly.	
18 to 24 in.	\$1.50
2 to 3 ft.	2.50
Laurocerasus Caroliniana , cherry laurel, fine evergreen tree.	
18 to 24 in.	\$1.50
2 to 3 ft.	2.00
3 to 4 ft.	3.00
Laurocerasus Rotundifolia , round leaf laurel.	
12 to 18 in.	\$2.00
18 to 24 in.	3.00
Laurocerasus Schipkaensis , Korean laurel.	
12 to 18 in.	\$2.00
18 to 24 in.	3.00

Ligustrum Japonicum , Japanese privet.	
2 to 3 ft.	\$1.00
3 to 4 ft.	1.50
Ligustrum Japonicum Excelsum Superbum , silver edge.	
3 in pots	\$0.75
Ligustrum Lucidum , glossy Japanese privet.	
2 to 3 ft.	\$2.00
3 to 4 ft.	3.00
Ligustrum Sinense , Amoor river privet.	
18 to 24 in.	\$4.00 per 100
2 to 3 ft.	5.00 per 100
Lonicera Nitida , evergreen bush honeysuckle.	
12 to 18 in.	\$1.00
18 to 24 in.	1.50
2 to 3 ft.	2.00
Magnolia Glauca , sweet bay.	
4 to 6 in.	\$0.75
Magnolia Grandiflora , southern magnolia.	
18 to 24 in.	\$1.50
Mahonia Aquifolium , Oregon grape.	
18 to 24 in.	\$1.25
2 to 3 ft.	1.75
Mahonia Japonica , leather leaf holly.	
12 to 18 in.	\$1.50
Mahonia Pinnata Fascicularis , cluster holly grape.	
18 to 24 in.	\$2.00
2 to 3 ft.	2.50
Myrtis Communis , true myrtle, hardy south.	
8 to 12 in.	\$1.00
Nandina Domestica , leaves green, tinged red; white blooms in June; red berries in fall staying on all winter; one of the best low evergreens that we know.	
12 to 18 in.	\$1.50
18 to 24 in.	2.00
2 to 3 ft.	2.50
Osmanthus Aquifolium , holly leaf osmanthus.	
12 to 18 in.	\$2.50
Ulex Furze , spiny plant with yellow pea shaped flowers.	
2 to 3 ft.	\$2.00
Viburnum Rhytidophyllum , leatherleaf evergreen snowball.	
12 to 18 in.	\$1.50
18 to 24 in.	2.00
Yucca Filamentosa , rock lily.	
2 year	\$0.25
3 year50



SPIREA VAN HOUTTE

Hardy Deciduous Flowering Shrubs

We submit this list as containing all of the best of the old standard sorts with a number of the newer introductions added, and from this list we can have flowers continually from March, and often January and February, to November, with brightly colored berries the balance of the year.

- Amorpha Canescens*, dwarf lead plant, spikes of blue flowers in June.
1 to 2 ft. 50c.
- Amorpha Fruticosa*, indigo bush, blue flowers in summer.
3 feet 50c.
- Amygdalus Persica Alba*, white flowering almond.
2 to 3 ft. 50c.
- Amygdalus Persica Rubra*, red flowering almond.
2 to 3 ft. 50c.
- Acanthopanax Pentaphyllum*, five leaved angelica, compact graceful shrub with compound foliage.
2 to 3 ft. 50c.
- Azalea Yodogawa*, light purple, double flower.
24 in. x 24 in. \$3.50
- Berberis Thunbergi*, a graceful shrub of low, dense habit; brilliant red berries in great profusion.
12 to 18 in. 50c.



BUDDLEIA—BUTTERFLY BUSH

Buddleia Variabilis, butterfly bush, blooms all summer.

18 to 24 in.50c.
2 to 3 ft.\$1.00

Buddleia Lindlyana, slender spikes of pale lilac flowers.

3 to 4 ft.\$1.00

Callicarpa Americana, beauty berry, loaded with purple berries in the fall.

3 to 4 ft.75c.

Callicarpa Purpurea, more slender than the preceding.

18 to 24 in.50c.

Calycanthus Floridus, sweet shrub, very sweet chocolate colored flowers and spice scented wood.

1 to 2 ft.50c.

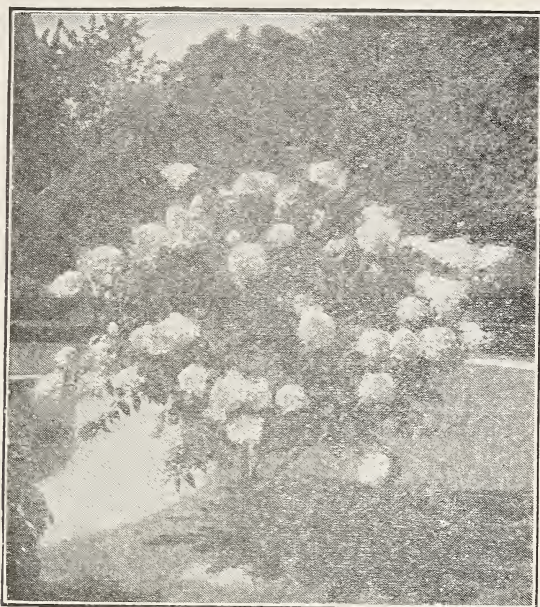
Caryopteris Mastacanthus, blue spirea.

.....50c.

Castanea Pimula, chinquepin.

4 to 5 ft.75c.

<i>Citrus Trifoliata</i> , hardy lemon.	
4 to 6 in.	25c.
<i>Clethra Alnifolia</i> , sweet pepper bush.	
1 to 2 ft.	50c.
<i>Chionanthus Virginica</i> , white fringe.	
18 to 24 in.	\$1.50
<i>Cornus Sanguinea</i> , red twigged dogwood.	
3 to 4 ft.	75c.
<i>Cydonia Japonica</i> , flowering quince, burning bush.	
18 to 24 in.	50c.
2 to 3 ft.	75c.
<i>Deutzia Candida</i> , double white, tall grower.	
3 to 4 ft.	\$0.75
4 to 5 ft.	1.00
<i>Deutzia Gracilis</i> , dwarf, pure white.	
18 to 24 in.	75c.
<i>Deutzia Gracilis Rosea</i> , rose flowers.	
18 to 24 in.	75c.
<i>Deutzia Lemoinei</i> , similar to gracilis.	
10 to 12 in.	50c.
<i>Deutzia Pride of Rochester</i> , double pink deutzia, grows ten to twelve feet high.	
3 to 4 ft.	\$0.50
4 to 5 ft.	1.00
Very large B. & B.	2.50
<i>Exochorda Grandiflora</i> , pearl bush.	
18 to 24 in.	50c.
2 to 3 ft.	75c.
<i>Eleagnus Longipes</i> , cherry eleagnus.	
3 to 4 ft.	\$1.00
<i>Euonymus Alatus</i> , winged euonymus.	
18 to 24 in.	\$1.00
2 to 3 ft.	1.50
<i>Euonymus Americana</i> , strawberry bush.	
3 to 4 ft.	50c.
<i>Euonymus Europeus</i> , European burning bush.	
2 to 3 ft.	\$0.50
3 to 4 ft.	1.00
<i>Forsythia Fortunei</i> , arching branches.	
2 to 3 ft.	50c.
<i>Forsythia Suspensa</i> , weeping golden bell.	
2 to 3 ft.	50c.
<i>Forsythia Viridissima</i> , upright golden bell.	
2 to 3 ft.	50c.
<i>Forsythia Spectabilis</i> , upright, an improvement on older kinds; very large flowers.	
3 to 4 ft.	\$1.00



HYDRANGEA P. G.

- Forsythia Seiboldi*, drooping golden bell.
 2 to 3 ft. 50c.
 3 to 4 ft. 75c.
- Hibiscus Syriacus*, althaea, rose of Sharon; double white, double red, semi-double purplish red, single white.
 2 to 3 ft. 50c.
- Hydrangea Arborescens*, wild hydrangea.
 2 to 3 ft. 50c.
- Hydrangea Hills of Snow*.
 18 to 24 in. 50c.
 2 to 3 ft. 75c.
- Hydrangea Paniculata Grandiflora*.
 18 to 24 in. 50c.
 2 to 3 ft. 75c.
- Hydrangea Quercifolia*, oak leaf hydrangea.
 2 to 3 ft. 75c.
- Hypericum Aureum*, golden st. Johns wort.
 2 to 3 ft. 50c.
- Hypericum Moseranum*, gold flower.
 2 year 50c.
- Hypericum Gladioides*, bedstraw St. Johns wort.
 2 year 50c.
- Hypericum Patulum Henryi*, Japanese St. Johns wort.
 2 to 3 ft. 50c.
- Jasminum Nudiflorum*, naked flowering jasmine.
 2 to 3 ft. 50c.

- Kerria Japonica**, double yellow flowers, green stems.
1 to 2 ft. 75c.
- Lagerstroemia Indica**, Crape Myrtle, pink.
2 to 3 ft. 50c.
- Lagerstroemia Indica**, Crape Myrtle, red.
2 to 3 ft. \$1.00
- Lagerstroemia Indica**, Crape Myrtle, White.
2 to 3 ft. \$1.50
- Lagerstroemia Indica**, Crape Myrtle, purple
2 to 3 ft. \$1.00
- Ligustrum Nanum Compactum**, Lodense privet, new
dwarf, fine for low hedges.
. 50c.
- Ligustrum Pendula**, weeping privet, fine to droop
over banks.
2 to 3 ft. \$0.50
3 to 4 ft. 1.00
- Ligustrum Ovalifolium Variegatum**, variegated Cal-
ifornia privet.
12 to 18 in. \$1.00
18 to 24 in. 1.50
- Ligustrum Quihoui**, summer flowering privet.
3 to 4 ft. \$0.50
5 to 6 ft. heavy 1.00
- Lonicera Fragrantissima**, fragrant bush honeysuckle,
almost evergreen, blooms in February and March
2 to 3 ft. 50c.
3 to 4 ft. 75c.
- Lonicera Morrowi**, white flowers, red berries.
2 to 3 ft. 50c.
- Lonicera Maacki**, red berries in fall.
2 to 3 ft. 50c.
- Lonicera Tartarica Rosea**, pink flowers.
3 to 4 ft. 50c.
- Lonicera Bella Candida**.
18 to 24 in. 50c.
- Magnolia Soulangeana**, pink Japanese magnolia.
2 to 3 ft. \$2.00
3 to 4 ft. 3.00
- Magnolia Purpurea**, (soulangeana nigra) purple Jap-
anese magnolia.
2 to 3 ft. \$2.00
3 to 4 ft. 3.00
- Magnolia Stellata**, white star magnolia.
2 to 3 ft. \$6.00
- Magnolia Grandiflora**, southern evergreen magnolia.
18 to 24 in. \$1.50
- Myrica Cerifera**, bayberry or candleberry.
2 to 3 ft. 50c.

<i>Neviusia Alabamensis</i> , snow wreath, a rare shrub found only near Tuscaloosa, Alabama.	
18 to 24 in.	50c.
<i>Philadelphus Coronarius</i> , sweet mock orange.	
2 to 3 ft.	50c.
3 to 4 ft.	75c.
<i>Philadelphus Virginal</i> , double white, very fine.	
18 to 24 in.	50c.
2 to 3 ft.	75c.
<i>Philadelphus Gordonianus</i> , Gordon's mock orange.	
2 to 3 ft.	50c.
<i>Potentilla Fruiticosa</i> , shrubby cinquefoil.	
2 to 3 ft.	50c.
3 to 4 ft.	75c.
<i>Punica</i> , pomegranite double red.	
2 to 3 ft.	50c.
<i>Rosa Hugonis</i> , a beautiful new yellow shrub rose from China.	
.....	\$1.00
<i>Rosa Nitida</i> , bristley rose.	
1 year	50c.
<i>Robina Hispida</i> , dwarf flowering locust.	
2 to 3 ft.	50c.
<i>Rhodotypus Kerroides</i> , white kerria.	
2 to 3 ft.	50c.
<i>Rhus Cotinus</i> , smoke tree.	
3 to 4 ft.	\$0.75
4 to 5 ft.	1.00
<i>Salix Caprea</i> , pussy willow.	
3 to 4 ft.	50c.
<i>Salix Incana</i> , rosemary willow.	
2 to 3 ft.	50c.
<i>Salix Vitellina Aurea</i> , gold bark willow.	
2 to 3 ft.	50c.
<i>Spirea Atchinsoni</i> .	
2 to 3 ft.	50c.
<i>Spirea Anthony Waterer</i> , dwarf everblooming.	
18 to 24 in.	50c.
<i>Spirea Callosa Alba</i> , white everblooming	
12 to 18 in.	50c.
18 to 24 in.	75c.
<i>Spirea Opulifolia</i> , beautiful red seed pods.	
3 to 4 ft.	75c.
<i>Spirea Prunifolia</i> , bridal wreath spirea.	
2 to 3 ft.	50c.
3 to 4 ft.	75c.
<i>Spirea Reevesia</i> .	
2 to 3 ft.	50c.



LILACS

- Spirea Thunbergi**, dwarf early white.
 18 to 24 in. 50c.
 2 to 3 ft. 75c.
- Spirea Van Houttei**, drooping branches, flowers in bunches.
 2 to 3 ft. 50c.
 3 to 4 ft. 75c.
- Stephandra Flexuosa**, cut leaf stephandra.
 3 to 4 ft. 50c.
 4 to 5 ft. 75c.
- Symphorocarpus Racemosus**, snowberry.
 18 to 24 in. 50c.
 2 to 3 ft. 75c.
- Symphorocarpus Racemosus**, snowberry.
 18 to 24 in. 50c.
 2 to 3 ft. 75c.
- Syringa Persica**, purple Persian lilac.
 12 to 18 in. 50c.
 18 to 24 in. 75c.
- Syringa Persica**, white Persian lilac.
 12 to 18 in. 50c.
 18 to 24 in. 75c.
- Syringa Vulgaris**, common purple lilac.
 2 to 3 ft. 50c.
 3 to 4 ft. 75c.
- Syringa Vulgaris**, double purple lilac.
 2 to 3 ft. 50c.
- Syringa Mme. Casimir Perier**, double white.
 2 to 3 ft. \$1.00
- Syringa Marie Legraye**.
 2 to 3 ft. \$1.00

Syringa Charles the Tenth.	
2 to 3 ft.	\$1.00
Syringa Congo, deep wine red.	
18 to 24 in.	\$1.00
Syringa Michel Buchner.	
18 to 24 in.	\$1.00
Syringa Miss Stepman, double white.	
2 to 3 ft.	\$1.00
Syringa Stadig de Rothpletz.	
2 to 3 ft.	\$1.00
Syringa Jacques Callot.	
2 to 3 ft.	\$1.00
Syringa Belle de Nancy.	
18 to 24 in.	\$1.00
Syringa President Viger.	
18 to 24 in.	\$1.00
Syringa Rene Jarry-Desloges.	
18 to 24 in.	\$1.00
Syringa President Grevy.	
18 to 24 in.	\$1.00
Syringa Jean Calot.	
18 to 24 in.	\$1.00
Syringa Philemon.	
18 to 24 in.	\$1.00
Syringa Josikea, Hungarian lilac, blooms late.	
18 to 24 in.	\$1.00
Syringa Pekinensis, Chinese lilac, yellowish white in large clusters; blooms in June.	
2 to 3 ft.	\$2.50
Vitex Agnis Castis, chaste tree.	
3 to 4 ft.	50c.
4 to 5 ft.	75c.
Weigela Heroine, white weigela.	
3 to 4 ft.	50c.
4 to 5 ft.	75c.
Weigela Rosea, pink weigela.	
2 to 3 ft.	50c.
Weigela Van Houtte, red.	
2 to 3 ft.	50c.
Weigela Nana Variegata, variegated leaves, pink flowers.	
2 to 3 ft.	50c.
Weigela Eva Rathke, red, blooms all summer.	
2 to 3 ft.	\$0.75
3 to 4 ft.	1.00
Weigela Gustav Malet, large pink flowers.	
2 to 3 ft.	50c.
3 to 4 ft.	75c.

Tamarix, salt cedar; foliage resembles asparagus. 2 to 3 ft.	50c.
Viburnum Opulis Steralis, common snowball. 2 to 3 ft.	50c.
Viburnum Plicatum, Japanese snowball. 2 to 3 ft.	50c.
Viburnum Tomentosum, single Japanese snowball. 2 to 3 ft.	50c.
Viburnum Carlesi, pink fragrant snowball. 12 to 18 in.	\$3.00
18 to 24 in.	4.00

Hardy Perennials

For the old fashioned garden

This list is not complete but contains much that is good and we are adding to it continuously and hope before another year to offer all the good ones.

Achillia Ptarmica, the Pearl, pure white all summer.	25c.
Achillea Millifolium Roseum, pink yarrow, spring and summer.	25c.
Allysum Sexatile Compacta, bright yellow in summer.	25c.
Anchusa Dropmore, heavenly blue, June.	25c.
Anthemis Tinctoria, golden, summer.	25c.
Aquilegia, Columbine, mixed colors, May and June.	25c.
Aruncus, Goats Beard, white, June.	25c.
Aster Nova Angelia, violet, purple, all summer.	25c.
Asclepias Tuberosa, butterfly weed, yellow, July.	25c.
Centaurea Montana, deep purple, July and Aug.	25c.
Chrysanthemum, hardy, white, yellow, bronze.	25c.
Coreopsis, all summer.	25c.
Delphinium, gold medal hybrids, shades of blue. .	25c.
Dianthus Barbatus, sweet William, mixed colors.	25c.
Dianthus Plumarius, grass pinks.	25c.
Dianthus Plumarius, grass pinks, double white. .	25c.
Digitalis Purpurea, foxglove mixed.	25c.
Dicentra Spectabilis, bleedingheart, old time favorite.	50c.
Dicentra Exemia, fine cut leaf, blooms all summer.	35c.
Funkia Subcardata, white day lily, August. . . .	35c.

Funkia Lancifolia , day lily, pale lilac, July.	25c.
Funkia Lancifolia Variegata , leaves variegated white.	25c.
Gillardi , blanket flower, all summer.	25c.
Hibiscus , mallows, red, white and pink mixed.	50c.
Hollyhock , double white.	25c.
Hollyhock , double yellow.	25c.
Hollyhock , double red.	25c.
Hollyhock , double Newport pink.	25c.
Hollyhock , double salmon rosé.	25c.
Heliopsis , yellow, June, July and August.	25c.
Hemerocallis Fulva Kwanso , double orange lily, July.	25c.
Hemerocallis Thunbergi , late flowering day lily, midsummer.	50c.
Hemerocallis Dumortieri , early yellow day lily.	50c.
Heuchera Brazoides , evergreen foliage, pink flowers.	25c.
Hydrangea Hortensis , pink or blue depending on soil conditions, needs some protection in winter.	2 year \$1.00
Iris Germanica , standards yellow, falls blue.	20c.
Iris Germanica , dark blue.	20c.
Iris Germanica , stands lavender, falls purple.	20c.
Iris Germanica , standards yellow, falls light pink.	20c.
Iris Germanica , Grantleib, nearest pink.	25c.
Iris Germanica , pale blue, long stem.	10c.
Iris Germanica , Pallida Dalmatica, lavender.	25c.
Iris Germanica , Madam Pacquita, nearest red.	25c.
Iris Germanica , pure yellow.	25c.
Iris Germanica , canary yellow.	10c.
Iris Germanica , H. Cramer, lavender.	25c.
Iris Germanica , white.	20c.
Iris Germanica , purple, late.	20c.
Iris Germanica , royal purple.	20c.
Iris Germanica , Madam Chereau, white, edged blue.	10c.
Iris Germanica , cream.	20c.
Iris Germanica , standards white, falls blue.	10c.
Iris Japonica , mixed sorts.	25c.
Iris Siberica , white.	10c.
Iris Siberica , blue.	10c.

<i>Iris Tectorum</i> , roof iris, blue.....	20c.
<i>Iberis Sempervirens</i> , evergreen candytuft.	25c.
<i>Lantana</i> , hardy, orange flowers all summer.....	25c.
<i>Lavendula Vera</i> , old fashioned sweet lavender.	25c.
<i>Lathyrus Latifolius</i> , hardy sweet pea.	25c.
<i>Lespedesia Alba</i> , white bush clover, August. 3 year, heavy.	50c.
<i>Lespedesia Formosa</i> , purple bush clover. 3 yr. heavy.	50c.
<i>Liatris Elegans</i> , Blazing star pinkscale gay- feather.	25c.
<i>Liatris Pycnostachya</i> , cattail grayfeather from Texas.	35c.
<i>Lily of the Valley</i>large clumps	35c.
<i>Narcissus Poeticus</i> , white, pink eye.....	5c.
<i>Narcissus Emperor</i> , pure yellow.	10c.
<i>Ophiopogon Jaburan</i> , goldstripe snakebeard. ..	25c.
<i>Oriental Poppy</i>	25c.
<i>Paeonia</i> , mixed colors, large clumps.....	50c.
<i>Phlox Baron von Dedem</i> , brilliant cochineal red, salmon shadings.	25c.
<i>Phlox Elizabeth Campbell</i> , soft pink, large flower	50c.
<i>Phlox Miss Lingard</i> , best early white.	25c.
<i>Phlox R. P. Struthers</i> , brilliant salmon rose.	25c.
<i>Phlox Richard Wallace</i> , white, large carmine eye.	25c.
<i>Phlox Rheinlander</i> , salmon pink.	25c.
<i>Phlox Rijnstroom</i> , rose pink, very large.	25c.
<i>Phlox von Lasburg</i> , pure white, immense panicles	25c.
<i>Phlox Red</i>	35c.
<i>Phlox Sublata</i> , creeping phlox, pink.....	25c.
<i>Physostegia Vivida</i> , new, very fine.....	35c.
<i>Plumbago Larpentae</i> , leadwort, blue, July till frost.	25c.
<i>Sage Holts Mammoth</i> , large clumps.....	25c.
<i>Tritoma Pfitzeri</i> , red hot poker plant, summer.	25c.
<i>Rudbeckia Purpurea</i> , purple cone flower.	25c.
<i>Rudbeckia Maxima</i> , great cone flower.....	25c.
<i>Rudbeckia Newmani</i> , small cone flower.....	25c.
<i>Rosemary</i> , old fashioned fragrant herb.	25c.
<i>Sedum Brilliant</i> , stonecrop, red, fall.	25c.
<i>Shasta Daisy</i> , early summer.	25c.

<i>Spiraea Filipendula</i> , fern like foliage, spikes of white flowers.	25c.
<i>Stokesia Cyanea</i> , Stokes purple aster.	25c.
<i>Verbena</i> , hardy, red shaded purple, all summer.	25c.
<i>Veronica Repens</i> , creeping speedwell, blue spring	25c.
<i>Vinca Major</i> , large periwinkle.....	25c.
<i>Vinca Minor</i> , small periwinkle.....	25c.



CATALPA BUNGEI

Deciduous Trees

This list contains shade and flowering trees, but principally flowering, and we wish to stress this idea of small flowering trees for both the small lawn and the pretentious estate. Nothing gives a more pleasing effect.

Acer Platanoides, Norway maple.

5 to 6 ft. \$2.00

Acer Dasycarpum, Sugar maple. Best slow growing shade tree.

6 to 8 ft. \$1.00

8 to 10 ft. 1.50

10 to 12 ft. 2.00

Acer Schwedleri, red leaf Norway maple.

6 to 8 ft. \$5.00

Acer Palmatum Autropurpurem, blood leaf Japanese maple.

15 to 18 in. \$5.00

Acer Palmatum Disectum, thread leaf Japanese maple.

15 to 18 in. \$5.00



LOMBARDY POPLARS

Albizzia, mimosa tree.

2 to 3 ft.	\$1.00
3 to 4 ft.	2.00

Amygdalis Persica Alba, white flowering peach.

2 to 3 ft.	\$1.00
3 to 4 ft.	1.50

Amygdalus Persica Rubra, red flowering peach.

2 to 3 ft.	\$1.00
3 to 4 ft.	1.50

Aralia Spinosa, hercules club, devils walking stick.

4 to 5 ft.	\$1.00
5 to 6 ft.	1.50

Catalpa Bungei,

5 to 6 ft. 2 year heads	\$3.50
-------------------------------	--------

Cercidoyphyllum Japonicum, katsura tree.

4 to 5 ft.	\$2.00
5 to 6 ft.	3.00
6 to 8 ft.	4.00
8 to 10 ft.	5.00

Cercis Canadensis, red bud.

4 to 5 ft.	\$0.75
5 to 6 ft.	1.00

Cornus Florida Alba, white flowering dogwood.

3 to 4 ft.	\$0.75
4 to 5 ft.	1.00

Corus Florida Plena, double white flowering dogwood.

18 to 24 in.	\$2.50
-------------------	--------

Cornus Florida Rubra, red flowering dogwood.

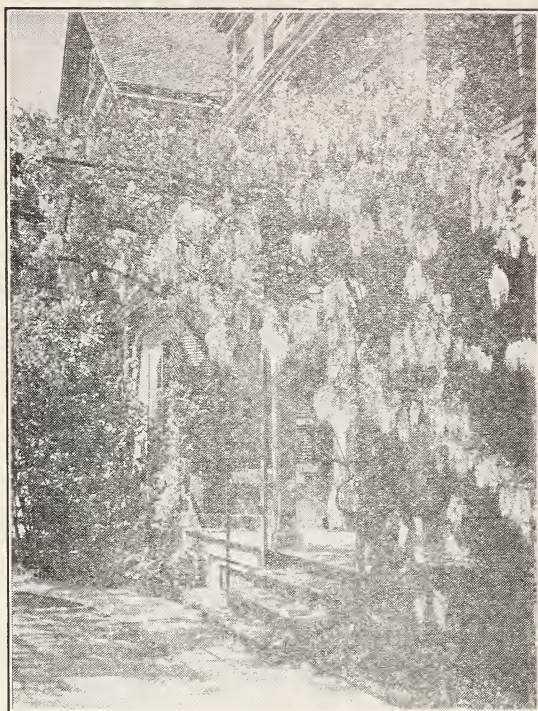
12 to 18 in.	\$2.00
18 to 24 in.	2.50

<i>Hamamelis Virginica</i> , witch hazel.	
12 to 18 in.	\$0.50
<i>Halesia Tetroptera</i> , snowdrop tree.	
3 to 4 ft.	\$1.50
<i>Koelrutea Paniculata</i> , varnish tree.	
3 to 4 ft.	\$1.00
<i>Liriodendron Tulipifera</i> , tulip poplar.	
5 to 6 ft.	\$1.00
6 to 8 ft.	1.50
<i>Oxydendron Arboretum</i> , sourwood (andromeda arborea).	
2 to 3 ft.	\$1.50
<i>Platanus Occidentalis</i> , American sycamore.	
5 to 6 ft.	\$1.00
<i>Populus Italica Fastigata</i> , Lombardy poplar	
6 to 8 ft.	\$1.00
8 to 10 ft.	1.25
10 to 12 ft.	1.50
<i>Salix Babylonica</i> , weeping willow.	
5 to 6 ft.	\$1.00
<i>Salisburya Adiantifolia</i> , maiden hair tree.	
2 to 3 ft.	\$1.00
3 to 4 ft.	1.50
<i>Sterculia Platanifolia</i> , Japanese parasol tree.	
6 to 8 ft.	\$2.00
<i>Styrax Japonica</i> , Japanese snowdrop tree.	
2 to 3 ft.	\$1.50

Climbing Vines

Climbing vines for all purposes. Containing some varieties not used as much as they should be.

<i>Actinidia Arguta</i> , fast growing, large leaf, woody climber.	
2 year	\$1.00
<i>Ampelopsis Tricuspidata veitchi</i> , clings to brick.	
3 year	\$0.75
<i>Akebia Quinata</i> , Japanese twining vine, compound leaves.	
2 in. pots	\$0.75
<i>Berchima Racemosa</i> , green stems, red berries.	
2 year	\$1.00
<i>Bignonia Radicans</i> , trumpet creeper.	
2 to 3 ft.	\$0.75
<i>Celastrus Scandens</i> , bittersweet.	
2 to 3 ft.	\$0.75



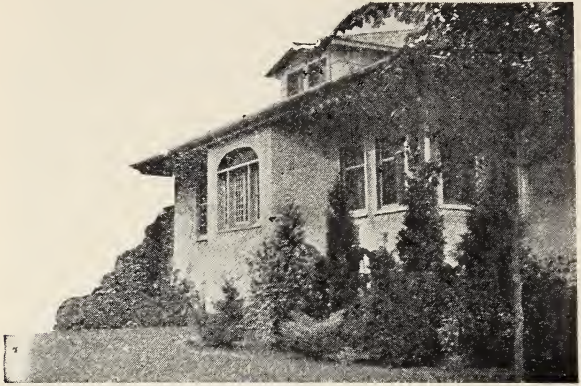
WISTERIA

- Clematis Jackmani*, violet purple clematis.
 2 year\$1.50
- Clematis Paniculata*, fragrant white star shaped
 flowers.
\$0.50
- Euonymus Radicans*, climbing euonymus.
 2 year\$0.50
- Euonymus Radicans Variegata* variegated leaves.
 3 in. pots\$0.50
- Euonymus Radicans Acutus*, sharp leaf wintercreeper
 18 to 24 in.\$0.75
- Euonymus Kewensis*, baby wintercreeper.
 2 in pots\$0.50
- Gelsinium Sempervirens*, southern yellow jasmine.
\$0.75
- Hedera Helix*, English ivy.
 2 year\$0.75
 3 year 1.00
- Hedera Colchica*, broad leaf ivy.
 Strong plants\$1.00
- Hedera Digitata*, small cut leaves.
 2 year\$0.75

Lonicera Heckrotti , everblooming honeysuckle.	
2 to 3 ft.	\$0.75
3 to 4 ft.	1.00
Lonicera Sullivanti , yellow flowers, round leaves.	
2 to 3 ft.	\$0.75
Madera vine.	
Tubers	\$0.25
Wisteria Sinensis , purple flowering.	
2 to 3 ft.	\$1.00
3 to 4 ft.	1.50
Wisteria Sinensis Alba , white Chinese wisteria.	
2 to 3 ft. grafted	\$2.00
Smilax Laurifolia , Jackson vine.	
3 year strong plants	\$1.00
Kudzu Vine , Japanese wonder vine.	
Strong plants	\$0.50

Climbing Roses

American Pillar , (HW) large, single, pink.	
2 year strong	\$0.75
Aviateur Bleriot , (HW) saffron yellow. . .	
.....	\$0.75
Crimson Rambler , (Mult) crimson, in clusters.	
2 year	\$0.50
Dorothy Perkins , (HW) shell pink.	
2 year	\$0.50
Dr. Van Fleet , (HW) flesh pink, large.	
2 year	\$0.75
Emily Gray , (HW) yellow.	
2 year	\$0.75
Excelsa , (HW) crimson.	
2 year	\$0.75
Mary Wallace , (HW) clear rose pink.	
2 year	\$0.75
Paul's Scarlet (HW) scarlet.	
2 year	\$0.75
Silver Moon , (HW) pure white.	
2 year	\$0.75
Cherokee , (Laevigata) single white.	
1 year	\$0.50
Tauscendschon , (Mult) thousand beauty.	
2 year	\$0.75
Wichuriana , single white.	
2 year	\$0.50



Landscape Department

Our Landscape Department is at your service for planting the small city lot or the large country estate. Our charges are reasonable and our service is good.

Let us give you an estimate on your work or submit bids on your plans.

We invite correspondence in regard to all of your problems.

We do not carry fruit trees but are in a position to refer you to concerns that will give you good trees true to name at a reasonable price.

An Invitation

You are cordially invited to come out and see our stock—drive out either Magnolia or Jackson Avenue to Chestnut Street, turn to right, and drive $\frac{1}{2}$ mile. Jackson Avenue car comes to within 1500 feet of our place—come to end of the car line. We are located on top of hill to the right.

HOWELL NURSERIES

R. D. No. 4

KNOXVILLE, TENN.

PHONES:

Cumberland—703

Peoples—P8316

**PLANTERS
PRICE LIST
OF
ORNAMENTALS**



**GROWN BY
HOWELL NURSERIES
R. F. D. No. 4.
KNOXVILLE, TENNESSEE**

**PEOPLES PHONE P8316
BELL PHONE . . . 703**

VISITORS WELCOME